

UGC NET December 2012 Paper I solved

Q1. The English word 'Communication' is derived from the words

- (A) Communis and Communicare
- (B) Communist and Commune
- (C) Communism and Communalism
- (D) Communion and Common sense

Ans: (A)

Q2. Chinese Cultural Revolution leader Mao Zedong used a type of communication to talk to the masses is known as

- (A) Mass line communication
- (B) Group communication
- (C) Participatory communication
- (D) Dialogue communication

Ans: (A)

Q3. Conversing with the spirits and ancestors is termed as

- (A) Transpersonal communication
- (B) Intrapersonal communication
- (C) Interpersonal communication
- (D) Face-to-face communication

Ans: (A)

Q4. The largest circulated daily newspaper among the following is

- (A) The Times of India
- (B) The Indian Express
- (C) The Hindu
- (D) The Deccan Herald

Ans: (A)

Q5. The pioneer of the silent feature film in India was

- (A) K.A. Abbas

- (B) Satyajit Ray
- (C) B.R. Chopra
- (D) Dada Sahib Phalke

Ans: (D)

Q6. Classroom communication of a teacher rests on the principle of

- (A) Infotainment
- (B) Edutainment
- (C) Entertainment
- (D) Power equation

Ans: (B)

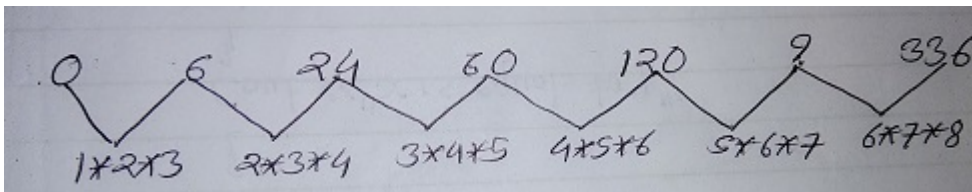
Q7. The missing number in the series :

0, 6, 24, 60, 120, ?, 336, is

- (A) 240
- (B) 220
- (C) 280
- (D) 210

Ans: (D)

Explanation:



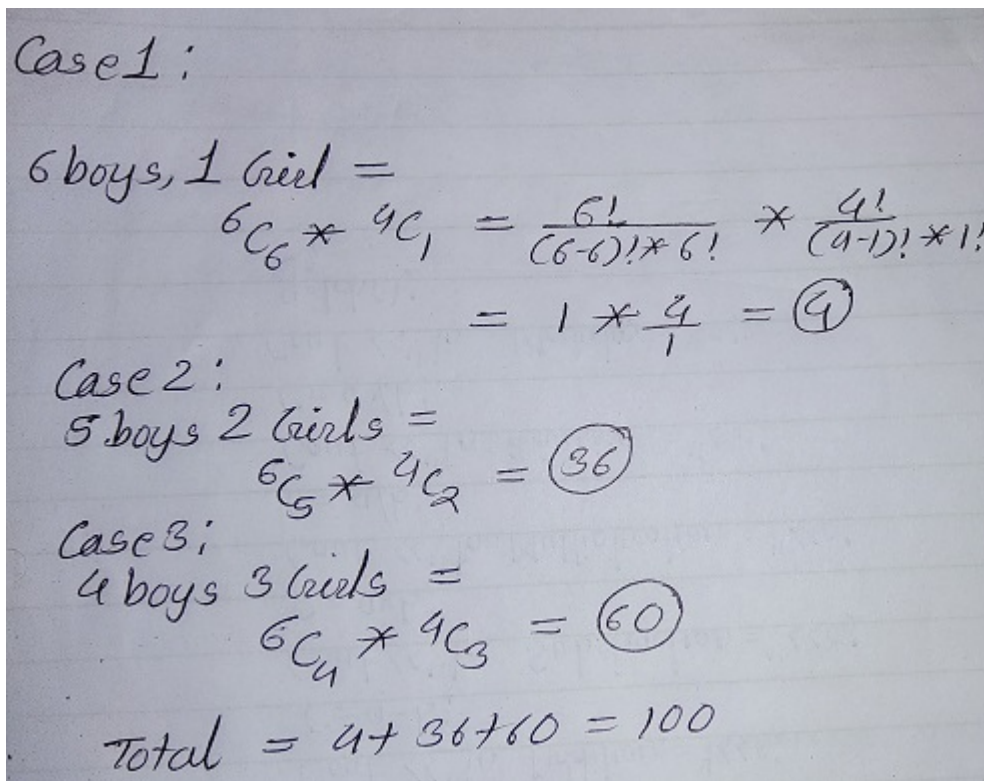
Q8. A group of 7 members having a majority of boys is to be formed out of 6 boys and 4 girls. The number of ways the group can be formed is

- (A) 80

- (B) 100
- (C) 90
- (D) 110

Ans: (B)

Explanation:



Q9. The number of observations in a group is 40. The average of the first 10 members is 4.5 and the average of the remaining 30 members is 3.5. The average of the whole group is

- (A) 4
- (B) 15/2
- (C) 15/4
- (D) 6

Ans: (C)

Explanation:

Given,

Total observations = 40

Average of First 10 observations = 4.5

Average of Remaining 30 observations = 3.5

By using,

Average = Sum/numberOfMembers.

So Sum=Average X numberOfMembers

Sum of First 10 members = $4.5 \times 10 = 45$

Sum of Remaining 30 members = $3.5 \times 30 = 105$

Now,

Average of Total observations = (Sum of 10 members + Sum of Remaining 30 members) / Total observations

So,

Average of Total observations = $(45 + 105) / 40$

= $150 / 40 = 15/4$

Q10. If MOHAN is represented by the code KMFYL, then COUNT will be represented by

(A) AMSLR

(B) MSLAR

(C) MASRL

(D) SAMLR

Ans: (A)

Q11. The sum of the ages of two persons A and B is 50. 5 years ago, the ratio of their ages was 5/3.

The present age of A and B are

(A) 30, 20

(B) 35, 15

(C) 38, 12

(D) 40, 10

Ans: (A)

Q12. Let a means minus (-), b means multiplied by (X), C means divided by (/) and D means plus (+).

The value of $90 \text{ D } 9 \text{ a } 29 \text{ C } 10 \text{ b } 2$ is

- (A) 8
- (B) 10
- (C) 12
- (D) 14

Ans: (D)

Q13. Consider the Assertion-I and Assertion-II and select the right code given below:

Assertion-I: Even Bank-lockers are not safe. Thieves can break them and take away your wealth. But thieves cannot go to heaven. So you should keep your wealth in heaven.

Assertion-II: The difference of skin-colour of beings is because of the distance from the sun and not because of some permanent traits. Skin-colour is the result of body's reaction to the sun and its rays.

Codes :

- (A) Both the assertions-I and II are forms of argument.
- (B) The assertion-I is an argument but the assertion-II is not.
- (C) The assertion-II is an argument but the assertion-I is not.
- (D) Both the assertions are explanations of facts.

Ans: (B)

Q14. By which of the following proposition, the proposition 'some men are not honest' is contradicted?

- (A) All men are honest.
- (B) Some men are honest.
- (C) No men are honest.
- (D) All of the above.

Ans: (A)

Q15. A stipulative definition is

- (A) always true
- (B) always false
- (C) sometimes true sometimes false
- (D) neither true nor false

Ans: (D)

Q16. Choose the appropriate alternative given in the codes to replace the question mark.

Examiner - Examinee, Pleader - Client, Preceptor -?

- (A) Customer
- (B) Path-finder
- (C) Perceiver
- (D) Disciple

Ans: (D)

Q17. If the statement 'most of the students are obedient' is taken to be true, which one of the following pair of statements can be claimed to be true?

- I. All obedient persons are students.
- II. All students are obedient.
- III. Some students are obedient.
- IV. Some students are not disobedient.

Codes :

- (A) I & II
- (B) II & III
- (C) III & IV
- (D) II & IV

Ans: (C)

Q18. Choose the right code:

A deductive argument claims that:

- I. The conclusion does not claim something more than that which is contained in the premises.
- II. The conclusion is supported by the premise/premises conclusively.
- III. If the conclusion is false, then premise/premises may be either true or false.
- IV. If premise/combination of premises is true, then conclusion must be true.

Codes:

- (A) I and II

- (B) I and III
- (C) II and III
- (D) All the above

Ans: (A)

On the basis of the data given in the following table, give answers to questions from 19 to 24 :

S.I. No.	Items	2007-08	2008-09	2009-10	2010-11
	Social Services	11.06	12.94	13.06	14.02
(a)	Education, sports & youth affairs	4.02	4.04	3.96	4.46
(b)	Health & family welfare	2.05	1.91	1.90	2.03
(c)	Water supply, housing, etc,	2.02	2.31	2.20	2.27
(d)	Information & broadcasting	0.22	0.22	0.20	0.22
(e)	Welfare to SC/ST & OBC	0.36	0.35	0.41	0.63
(f)	Labour and employment	0.27	0.27	0.22	0.25
(g)	Social welfare & nutrition	0.82	0.72	0.79	1.06
(h)	North-eastern areas	0.00	1.56	1.50	1.75
(i)	Other social services	1.29	1.55	1.87	1.34
	Total Government expenditure	100.00	100.00	100.00	100.00

Q19. How many activities in the social services are there where the expenditure has been less than 5 percent of the total expenditures incurred on the social services in 2008-09?

- (A) One
- (B) Three
- (C) Five
- (D) All the above

Ans: (D)

Q20. In which year, the expenditures on the social services have increased at the highest rate?

- (A) 2007-08
- (B) 2008-09
- (C) 2009-10
- (D) 2010-11

Ans: (B)

Q21. Which of the following activities remains almost stagnant in terms of share of expenditures?

- (A) North-eastern areas
- (B) Welfare to SC/ST & OBC
- (C) Information & broadcasting
- (D) Social welfare and nutrition

Ans: (C)

Q22. Which of the following item's expenditure share is almost equal to the remaining three items in the given years?

- (A) Information & broadcasting
- (B) Welfare to SC/ST and OBC
- (C) Labour and employment
- (D) Social welfare & nutrition

Ans: (D)

Q23. Which of the following items of social services has registered the highest rate of increase in expenditures during 2007-08 to 2010-11?

- (A) Education, sports & youth affairs
- (B) Welfare to SC/ST & OBC
- (C) Social welfare & nutrition
- (D) Overall social services

Ans: (B)

Q24. Which of the following items has registered the highest rate of decline in terms of expenditure during 2007-08 to 2009-10?

- (A) Labour and employment
- (B) Health & family welfare
- (C) Social welfare & nutrition
- (D) Education, sports & youth affairs

Ans: (A)

Q25. ALU stands for

- (A) American Logic Unit
- (B) Alternate Local Unit
- (C) Alternating Logic Unit
- (D) Arithmetic Logic Unit

Ans: (D)

Q26. A Personal Computer uses a number of chips mounted on a circuit board called

- (A) Microprocessor
- (B) System Board
- (C) Daughter Board
- (D) Mother Board

Ans: (D)

Q27. Computer Virus is a

- (A) Hardware
- (B) Bacteria
- (C) Software
- (D) None of these

Ans: (C)

Q28. Which one of the following is correct?

- (A) $(17)_{10} = (17)_{16}$
- (B) $(17)_{10} = (17)_8$
- (C) $(17)_{10} = (10111)_2$
- (D) $(17)_{10} = (10001)_2$

Ans: (D)

Q29. The file extension of MS-Word document in Office 2007 is _____.

- (A) .pdf
- (B) .doc
- (C) .docx

(D) .txt

Ans: (C)

Q30. _____ is a protocol used by e-mail clients to download e-mails to your computer.

(A) TCP

(B) FTP

(C) SMTP

(D) POP

Ans: (D)

Q31. Which of the following is a source of methane?

(A) Wetlands

(B) Foam Industry

(C) Thermal Power Plants

(D) Cement Industry

Ans: (A)

Q32. 'Minamata disaster' in Japan was caused by pollution due to

(A) Lead

(B) Mercury

(C) Cadmium

(D) Zinc

Ans: (B)

Q33. Biomagnification means increase in the

(A) concentration of pollutants in living organisms

(B) number of species

(C) size of living organisms

(D) biomass

Ans: (A)

Q34. Nagoya Protocol is related to

(A) Climate change

- (B) Ozone depletion
- (C) Hazardous waste
- (D) Biodiversity

Ans: (D)

Q35. The second most important source after fossil fuels contributing to India's energy needs is

- (A) Solar energy
- (B) Nuclear energy
- (C) Hydropower
- (D) Wind energy

Ans: (C)

Q36. In case of earthquakes, an increase of magnitude 1 on Richter Scale implies

- (A) a ten-fold increase in the amplitude of seismic waves.
- (B) a ten-fold increase in the energy of the seismic waves.
- (C) two-fold increase in the amplitude of seismic waves.
- (D) two-fold increase in the energy of seismic waves.

Ans: (A)

Q37. Which of the following is not a measure of Human Development Index?

- (A) Literacy Rate
- (B) Gross Enrolment
- (C) Sex Ratio
- (D) Life Expectancy

Ans: (C)

Q38. India has the highest number of students in colleges after

- (A) the U.K.
- (B) the U.S.A.
- (C) Australia
- (D) Canada

Ans: (B)

Q39. Which of the following statement(s) is/are not correct about the Attorney General of India?

1. The President appoints a person, who is qualified to be a Judge of a High Court, to be the Attorney General of India.
2. He has the right of audience in all the Courts of the country.
3. He has the right to take part in the proceedings of the Lok Sabha and the Rajya Sabha.
4. He has a fixed tenure.

Select the correct answer from the codes given below :

Codes :

- (A) 1 and 4
- (B) 2, 3 and 4
- (C) 3 and 4
- (D) 3 only

Ans: (A)

Q40. Which of the following prefix President Pranab Mukherjee desires to be discontinued while interacting with Indian dignitaries as well as in official notings ?

1. His Excellency
2. Mahamahim
3. Hon'ble
4. Shri/Smt.

Select the correct answer from the codes given below :

Codes :

- (A) 1 and 3
- (B) 2 and 3
- (C) 1 and 2
- (D) 1, 2 and 3

Ans: (C)

Q41. Which of the following can be done under conditions of financial emergency?

1. State Legislative Assemblies can be abolished.
2. Central Government can acquire control over the budget and expenditure of States.
3. Salaries of the Judges of the High Courts and the Supreme Court can be reduced.

4. Right to Constitutional Remedies can be suspended.

Select the correct answer from the codes given below:

Codes:

(A) 1, 2 and 3

(B) 2, 3 and 4

(C) 1 and 2

(D) 2 and 3

Ans: (D)

Q42. Match List - I with List - II and select the correct answer from the codes given below:

List-I		List-II	
(a)	Poverty Reduction Programme	(i)	Mid-day Meals
(b)	Human Development Scheme	(ii)	Indira Awas Yojana (IAY)
(c)	Social Assistance Scheme	(iii)	National Old Age Pension (NOAP)
(d)	Minimum Need Scheme	(iv)	MNREGA

Codes :

	(a)	(b)	(c)	(d)
(A)	(iv)	(i)	(iii)	(ii)
(B)	(ii)	(iii)	(iv)	(i)
(C)	(iii)	(iv)	(i)	(ii)
(D)	(iv)	(iii)	(ii)	(i)

Ans: (A)

Q43. For an efficient and durable learning, learner should have

(A) ability to learn only

(B) requisite level of motivation only

- (C) opportunities to learn only
- (D) desired level of ability and motivation

Ans: (D)

Q44. Classroom communication must be

- (A) Teacher centric
- (B) Student centric
- (C) General centric
- (D) Textbook centric

Ans: (B)

Q45. The best method of teaching is to

- (A) impart information
- (B) ask students to read books
- (C) suggest good reference material
- (D) initiate a discussion and participate in it

Ans: (D)

Q46. Interaction inside the classroom should generate

- (A) Argument
- (B) Information
- (C) Ideas
- (D) Controversy

Ans: (C)

Q47. "Spare the rod and spoil the child", gives the message that

- (A) punishment in the class should be banned.
- (B) corporal punishment is not acceptable.
- (C) undesirable behaviour must be punished.
- (D) children should be beaten with rods.

Ans: (C)

Q48. The type of communication that the teacher has in the classroom, is termed as

- (A) Interpersonal
- (B) Mass communication
- (C) Group communication
- (D) Face-to-face communication

Ans: (C)

Q49. Which one of the following is an indication of the quality of a research journal?

- (A) Impact factor
- (B) h-index
- (C) g-index
- (D) i10-index

Ans: (A)

Q50. Good 'research ethics' means

- (A) Not disclosing the holdings of shares/stocks in a company that sponsors your research.
- (B) Assigning a particular research problem to one Ph.D./research student only.
- (C) Discussing with your colleagues confidential data from a research paper that you are reviewing for an academic journal.
- (D) Submitting the same research manuscript for publishing in more than one journal.

Ans: (B)

Q51. Which of the following sampling methods is based on probability?

- (A) Convenience sampling
- (B) Quota sampling
- (C) Judgement sampling
- (D) Stratified sampling

Ans: (D)

Q52. Which one of the following references is written according to American Psychological Association (APA) format?

- (A) Sharma, V. (2010). Fundamentals of Computer Science. New Delhi : Tata McGraw Hill
- (B) Sharma, V. 2010. Fundamentals of Computer Science. New Delhi : Tata McGraw Hill

(C) Sharma.V. 2010. Fundamentals of Computer Science, New Delhi : Tata McGraw Hill

(D) Sharma, V. (2010), Fundamentals of Computer Science, New Delhi : Tata McGraw Hill

Ans: (A)

Q53. Arrange the following steps of research in correct sequence :

1. Identification of research problem
2. Listing of research objectives
3. Collection of data
4. Methodology
5. Data analysis
6. Results and discussion

(A) 1 - 2 - 3 - 4 - 5 - 6

(B) 1 - 2 - 4 - 3 - 5 - 6

(C) 2 - 1 - 3 - 4 - 5 - 6

(D) 2 - 1 - 4 - 3 - 5 - 6

Ans: (B)

Q54. Identify the incorrect statement:

- (A) A hypothesis is made on the basis of limited evidence as a starting point for further investigations.
- (B) A hypothesis is a basis for reasoning without any assumption of its truth.
- (C) Hypothesis is a proposed explanation for a phenomenon.
- (D) Scientific hypothesis is a scientific theory.

Ans: (D)

Read the following passage carefully and answer the questions (55 to 60):

The popular view of towns and cities in developing countries and of urbanization process is that despite the benefits and comforts it brings, the emergence of such cities connotes environmental degradation, generation of slums and squatters, urban poverty, unemployment, crimes, lawlessness, traffic chaos etc. But what is the reality? Given the unprecedented increase in urban population over the last 50 years from 300 million in 1950 to 2 billion in 2000 in developing countries, the wonder

really is how well the world has coped, and not how badly.

In general, the urban quality of life has improved in terms of availability of water and sanitation, power, health and education, communication and transport. By way of illustration, a large number of urban residents have been provided with improved water in urban areas in Asia's largest countries such as China, India, Indonesia and Philippines. Despite that, the access to improved water in terms of percentage of total urban population seems to have declined during the last decade of 20th century, though in absolute numbers, millions of additional urbanites, have been provided improved services. These countries have made significant progress in the provision of sanitation services too, together, providing for an additional population of more than 293 million citizens within a decade (1990-2000). These improvements must be viewed against the backdrop of rapidly increasing urban population, fiscal crunch and strained human resources and efficient and quality-oriented public management.

Q55. The popular view about the process of urbanization in developing countries is

- (A) Positive
- (B) Negative
- (C) Neutral
- (D) Unspecified

Ans: (B)

Q56. The average annual increase in the number of urbanites in developing countries, from 1950 to 2000 A.D. was close to

- (A) 30 million
- (B) 40 million
- (C) 50 million
- (D) 60 million

Ans: (A)

Q57. The reality of urbanization is reflected in

- (A) How well the situation has been managed.
- (B) How badly the situation has gone out of control.

(C) How fast has been the tempo of urbanization.

(D) How fast the environment has degraded.

Ans: (A)

Q58. Which one of the following is not considered as an indicator of urban quality of life?

(A) Tempo of urbanization

(B) Provision of basic services

(C) Access to social amenities

(D) All the above

Ans: (A)

Q59. The author in this passage has tried to focus on

(A) Extension of Knowledge

(B) Generation of Environmental Consciousness

(C) Analytical Reasoning

(D) Descriptive Statement

Ans: (C)

Q60. In the above passage, the author intends to state

(A) The hazards of the urban life

(B) The sufferings of the urban life

(C) The awareness of human progress

(D) the limits to growth

Ans: (D)

Related posts:

1. UGC NET June 2008 Paper 1 solved
2. UGC NET December 2010 Paper I solved
3. UGC NET June 2011 Paper I solved

4. UGC NET December 2011 Paper I solved
5. UGC NET December 2009 Paper I solved
6. UGC NET June 2012 Paper I solved
7. UGC NET December 2008 Paper I solved
8. UGC NET December 2012 Paper II solved
9. UGC NET June 2012 Paper II solved
10. UGC NET December 2013 Paper II solved
11. UGC NET December 2013 Paper III solved